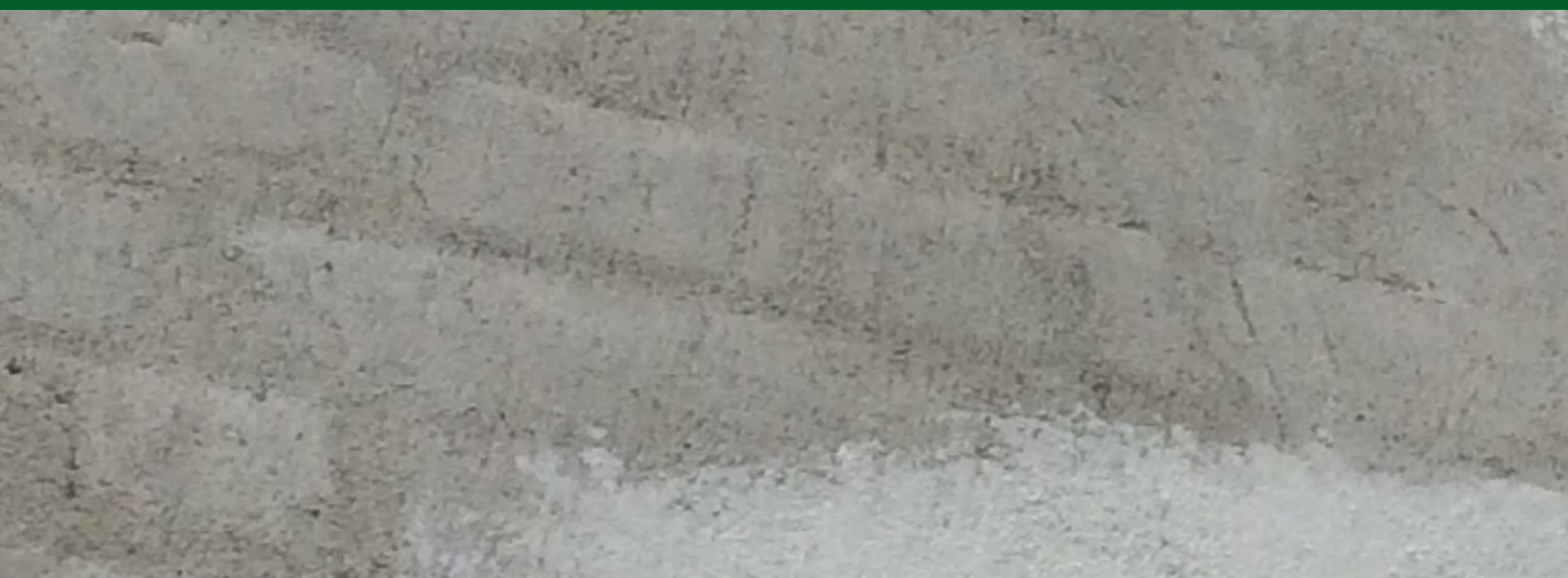




# proPERLA® FACADE COATING

A unique treatment technology that creates self-cleaning and super hydrophobic facades, without affecting its breathability.

Waterproof, self-cleaning & breathable exterior wall coating.







## Self cleaning effect

Dirt particles are unable to obtain a hold on the proPERLA® coated facade and will simply flow off with rainfall. The façade remains clean and attractive, even on sides which are particularly exposed to the weather like on the north-facing side or facades in shade.

## Super hydrophobic

You will recognise the excellent water repellent properties by its beading behavior. It will make the masonry dry and extremely resistant to biological hazards, mould, mildew, etc. A dry masonry will improve the thermal resistance, prevent frost damage and reduce the growth of microbial spores.

## The benefits of applying it

- ✓ It creates self cleaning and super hydrophobic facades.

---

- ✓ The masonry is able to breathe and will be permeable to water vapour.

---

- ✓ Dirt particles are unable to obtain a hold on the proPERLA® coated facade and will simply flow off with rainfall.

---

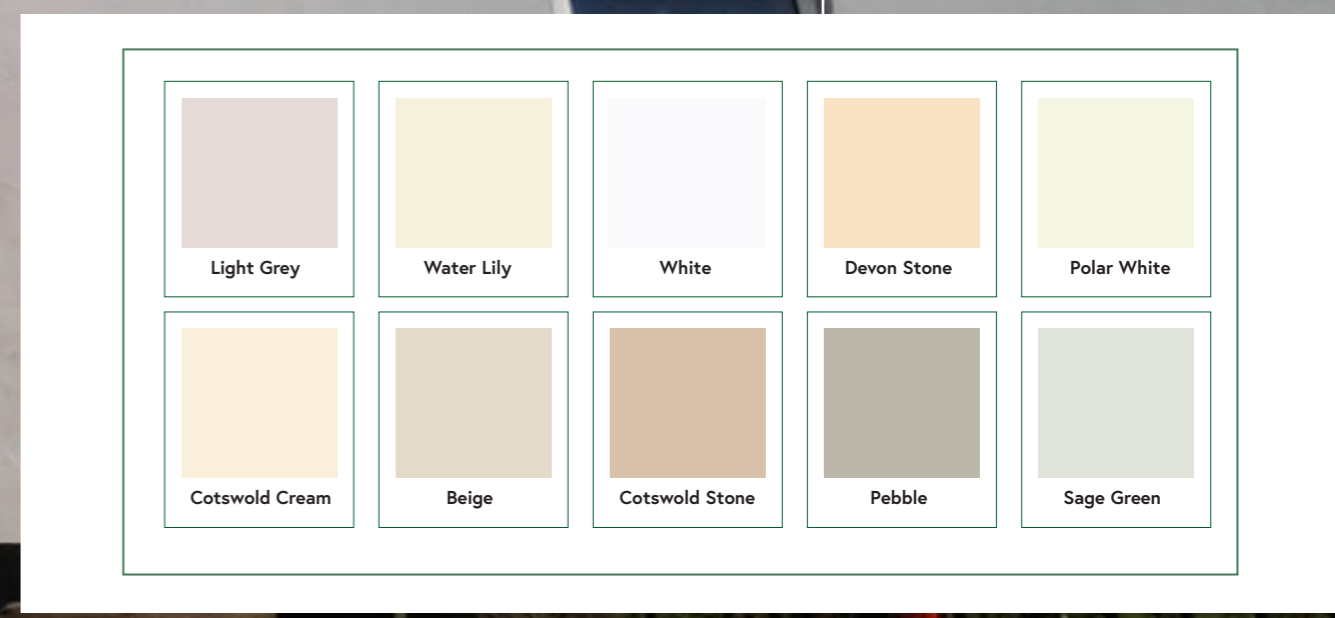
- ✓ It will make the masonry dry and extremely resistant to biological hazards, mould, mildew, etc.

---

- ✓ Comes with a 10 year manufacturers guarantee and a 25 year life expectancy.

---

## Ready mix colours



Light Grey

Water Lily

White

Devon Stone

Polar White

Cotswold Cream

Beige

Cotswold Stone

Pebble

Sage Green